



Census of Marine Life Education and Outreach Network

December 21, 2007

In This Issue

[Season's Greetings](#)

[Remembering Robin](#)

[ArcOD Plankton](#)

[New ChEss Website](#)

[Deeper Than Light](#)

[Pacific Abyss](#)

[New TOPP Websites](#)

From the Census E&O Team...

Season's Greetings

As 2007 comes to a close and many of us prepare to spend the Holidays with our friends and families, the E&O Team at URI would like to extend Season's Greetings to our CoML family. Please accept our thanks for your hard work and support during 2007. We simply could not do our job without you. We look forward to continued success in our collaborative work during the coming years, and we wish you all a safe and happy New Year.

Remembering Robin

The Census community has suffered a great loss with the death of Robin Rigby, our friend and colleague. Her life and work have been celebrated in tributes on a number of Census project websites. You can view them on the following sites.



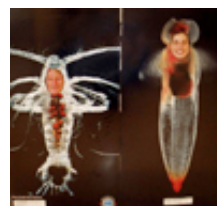
CeDAMar: www.cedamar.org

ChEss: www.noc.soton.ac.uk/chess

GoMA: <http://research.usm.maine.edu/gulfofmaine-census/>

ArcOD Brings Plankton to Life

The creativity of the ArcOD team was in evidence for a recent open house where they invited members of the public (and a few television hosts) to "become plankton." For the purpose of comparison, they brought in a live Clione and live copepods



to show visitors about to have their photo taken. The event was featured on Halifax's "Breakfast Television."

ChEss Introduces New Website



ChEss is the latest project to unveil a new website, joining their NaGISA, TOPP, CeDAMar, and GoMA colleagues who recently new sites of their own. The ChEss site features updates on news and events, a nice educational section aimed at the public, and a description and link to ChEssBase, their dynamic relational database. Please support their efforts to showcase their work by having a visit (www.noc.soton.ac.uk/chess).

All I Want for Christmas...

For those of you at a loss for ideas for holiday gifts, why not show your support for our Census colleagues studying the deep sea. Give the gift of **Deeper than Light**. Its beautiful images and engaging stories are sure to please even the most "Bah Humbug" of your friends and family.



English versions of the book are available for purchase from Amazon through the ChEss website (www.noc.soton.ac.uk/chess/).

BBC Documentary

Pacific Abyss

Beginning January 20, the BBC will air a three-part weekly series *Pacific Abyss*. The documentary will include footage of CReefs researcher Dr. Richard Pyle's work in the Caroline Islands. During the expedition, the team found as many as 28 new fish species including several species in the damselfish genus *Chromis*. One specimen, an intensely blue damselfish that lives at depths of 120 meters or more, was named *Chromis abyssus* in honor of the documentary, which provided funds for the voyage. Check your local listings.



New TOPP Websites



The team from TOPP has been very busy developing two new websites: TOPP.org and GreatTurtleRace.com. TOPP E&O Liaison Jane Stevens was unable to make it to Auckland to share them with us, but offers guides on how they were developed and background information online at: www.poynter.org/content/content_view.asp?id=129386

The Census of Marine Life is a global network of researchers in more than 80 nations engaged in a 10-year scientific initiative to assess and explain the diversity, distribution, and abundance of life in the oceans. The world's first comprehensive Census of Marine Life-past, present, and future-will be released in 2010. www.coml.org

[Forward email](#)

✉ [SafeUnsubscribe®](#)

This email was sent to jmharding@gso.uri.edu by darlene.crist@cox.net.
[Update Profile/Email Address](#) | Instant removal with [SafeUnsubscribe™](#) | [Privacy Policy](#).

Email Marketing by



Census of Marine Life | Office of Marine Programs | University of Rhode Island, Graduate School of Oceanography | South Ferry Road | Narragansett | RI | 02882